

0CI00-M18200EN

# Contents

Fig. No. Fig. Name

719573-51300

719573-51302

719573-51303

719574-51310

719574-51311

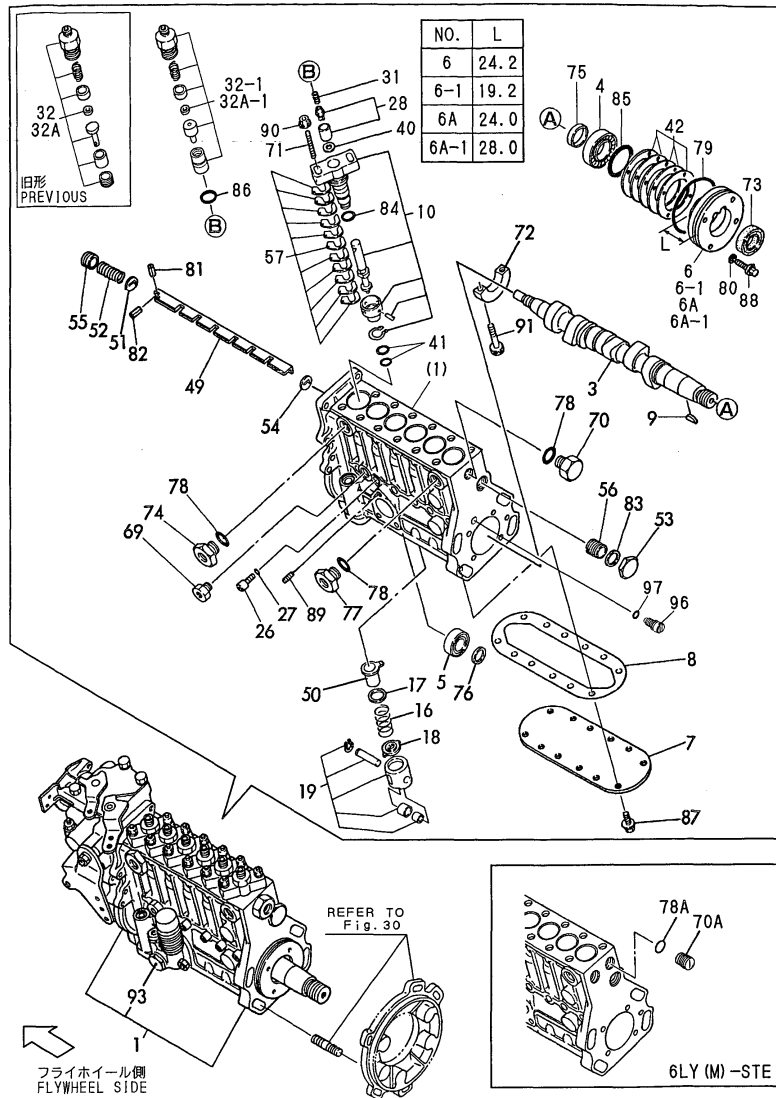
1. FUEL INJECTION PUMP

2. GOVERNOR

Fig. No. Fig. Name

Fig.1. FUEL INJECTION PUMP

(A)=719573-51300 (D)=719574-51310  
 (B)=719573-51302 (E)=719574-51311  
 (C)=719573-51303 (F)=



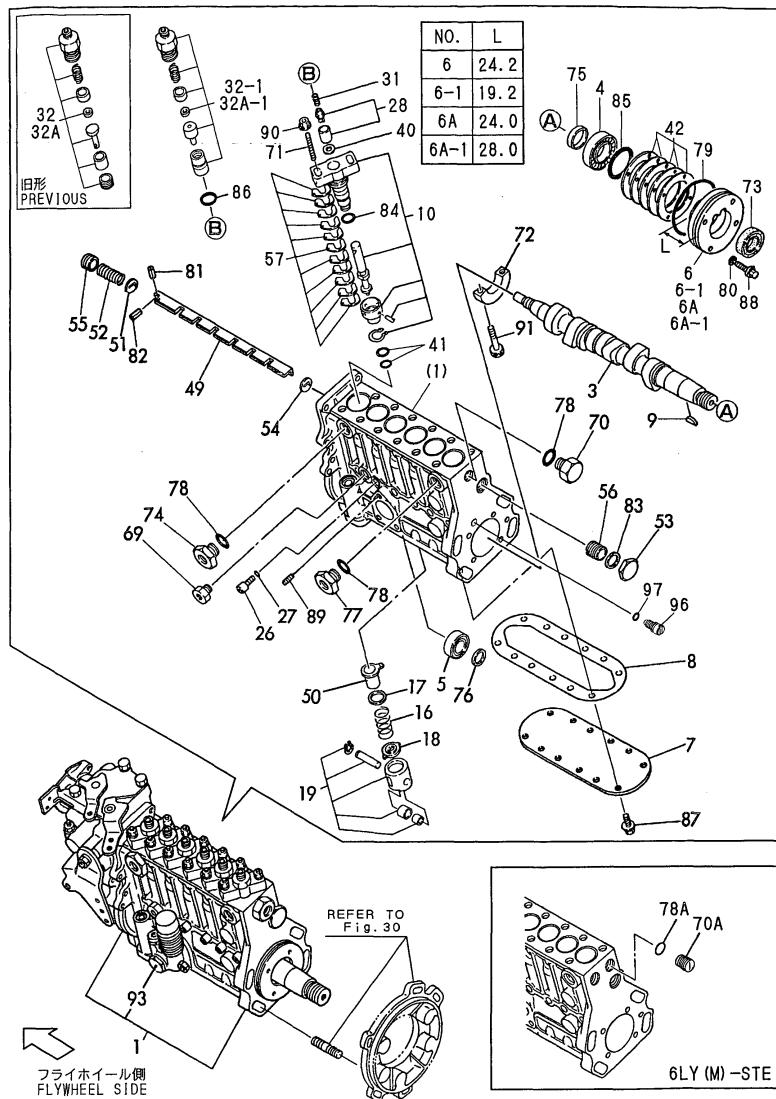
No.	Lev.	Parts No.	Description	Qty						I	R
				(A)	(B)	(C)	(D)	(E)	(F)		
1	1	719573-51300	PUMP ASSY, INJECTION	1							
1-1	1	719573-51302	PUMP ASSY, INJECTION	1	1						N
(A=E/#40336)											
1-2	1	719573-51303	PUMP ASSY, INJECTION	1	1	1					S 1
(A=E/#40643) (C=E/#40672)											
1A	1	719574-51310	PUMP ASSY, INJECTION					1			
1A-2	1	719574-51311	PUMP ASSY, INJECTION				1	1			N
(B=E/#50348) (D=E/#50338)											
3	2	119593-51030	CAMSHAFT	1	1	1					
3A	2	119594-51030	CAMSHAFT					1	1		
3A-1	2	119595-51030	CAMSHAFT						1		S
(B=*1997.06) (D=E/#50444)											
4	2	119000-51050	BEARING, HR32005XJ	1	1	1					
4A	2	24142-322050	BEARING, 32205H					1	1		
4A-1	2	119595-51050	BEARING						1		S
(B=*1997.06) (D=E/#50444)											
5	2	122710-51050	BEARING, HR30203J	1	1	1					
5A	2	124410-51050	BEARING					1	1		
6	2	119593-51060	SUPPORT, BEARING A	1							
6-1	2	119000-51060	SUPPORT, BEARING A		1	1					S
(A=E/#40336)											
6A	2	119594-51060	SUPPORT, BEARING A						1		
6A-1	2	119594-51061	SUPPORT, BEARING A							1	S
(B=E/#50348) (D=E/#50338)											
6A-2	2	119595-51060	RETAINER, BEARING A							1	S
(B=*1997.06) (D=E/#50444)											
7	2	119593-51080	COVER	1	1	1	1	1	1		
8	2	119593-51090	GASKET	1	1	1	1	1	1		
9	2	144626-51090	KEY, 5X19	1	1	1	1	1	1		
10	2	119593-51100	PLUNGER ASSY	6	6	6					
10A	2	119594-51100	PLUNGER ASSY						6	6	
16	2	119000-51161	SPRING, PLUNGER	6	6	6	6	6	6		
17	2	119000-51170	SEAT, SPRING A	6	6	6	6	6	6		
18	2	119000-51181	SEAT, SPRING B	6	6	6	6	6	6		
19	2	119573-51200	TAPPET ASSY	6	6	6					
19A	2	119594-51200	TAPPET ASSY						6	6	
19A-1	2	119595-51200	TAPPET ASSY						6	6	R
(B=*1997.06) (D=E/#50444)											
26	2	129155-51270	STOPPER, TAPPET	6	6	6	6	6	6		
27	2	129155-51280	O-RING, S6	6	6	6	6	6	6		
28	2	119593-51300	VALVE ASSY, DELIVERY	6	6	6					
31	2	119000-51330	SPRING, DELIVERY	6	6	6	6	6	6		
32	2	119187-51341	HOLDER, DELY. VALVE	6	6						
32-1	2	119175-51340	VALVE ASSY, DELIVERY					6			S
(A=E/#40643) (C=E/#40672)											
32A	2	119594-51340	VALVE ASSY, DELIVERY						6		
32A-1	2	119594-51341	VALVE ASSY, DELIVERY							6	S
(B=E/#50348) (D=E/#50338)											
40	2	122710-51350	GASKET	6	6	6					
40A	2	119594-51290	GASKET						6	6	
41	2	119000-51410	O-RING, S18	12	12	12	12	12	12		

Remarks  
 (1) INTERCHANGEABLE BY SIMULTANEOUS REPIACEMENT WITH FIG29 F.I. PIPE.  
 (A)=6LY-UTE.  
 (B)(C)=6LY-UTE,6LYM-UTE.  
 (D)(E)=6LY-STE,6LYM-STE.

# Fig.1. FUEL INJECTION PUMP

(A)=719573-51300  
(B)=719573-51302  
(C)=719573-51303

(D)=719574-51310  
(E)=719574-51311  
(F)=



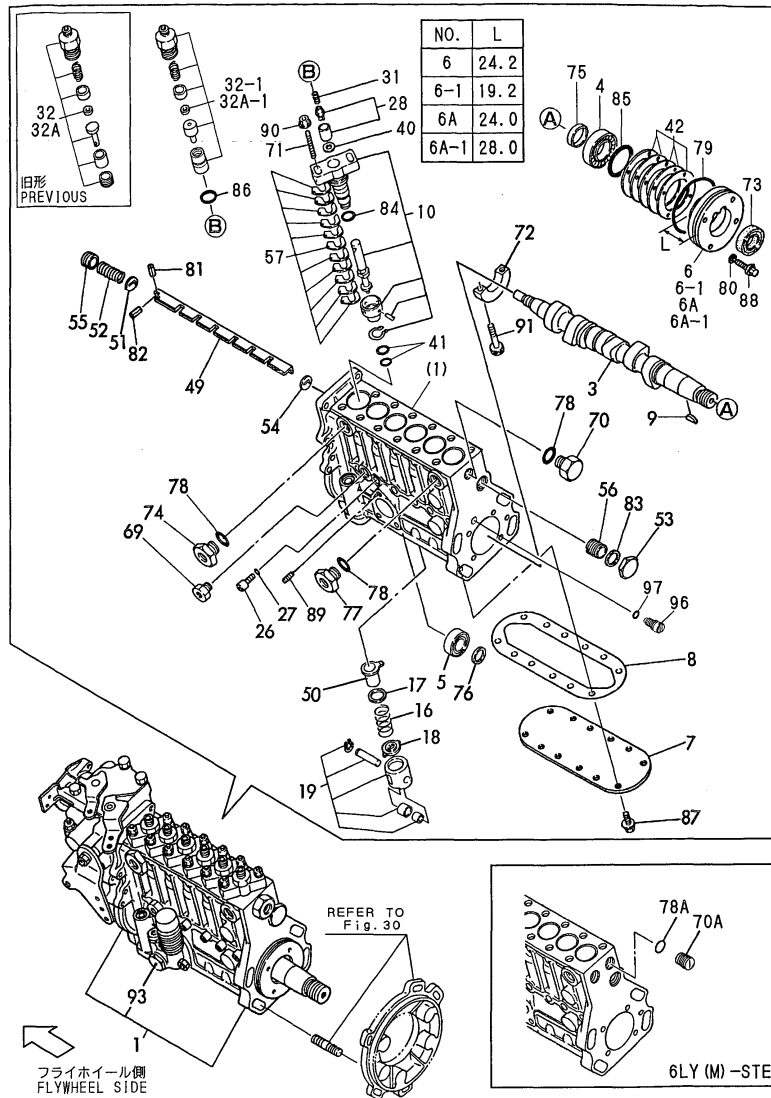
No.	Lev.	Parts No.	Description	Qty						I	R
				(A)	(B)	(C)	(D)	(E)	(F)		
42	2	119000-51450	SHIM SET, CAMSHAFT	1	1	1					
42A	2	119594-51450	SHIM SET, CAMSHAFT				1				
42A-1	2	119594-51451	SHIM SET, CAMSHAFT					1			S
(B=E/#50348) (D=E/#50338)											
49	2	119593-51500	RACK, CONTROL	1	1	1	1	1			
50	2	119000-51510	SLEEVE, CONTROL	6	6	6	6	6			
50-1	2	119000-51511	SLEEVE, CONTROL	6	6	6	6	6			R
(A=*1998.11) (B=*1998.11) (C=E/#40796) (D=E/#50479)											
51	2	119593-51520	WASHER	1	1	1	1	1			
52	2	119593-51530	SPRING, RACK	1	1	1	1	1			
53	2	119000-51550	COVER	1	1	1	1	1			
54	2	119000-51570	GUIDE, RACK	2	2	2	2	2			
55	2	119000-51580	SCREW	1	1	1	1	1			
56	2	119000-51590	SCREW	1	1	1	1	1			
57	2	119000-51650	SHIM SET, ADJUSTING	12	12	12	12	12			
69	2	121850-51700	BUSH	1	1	1	1	1			
70	2	152623-51720	PLUG	1	1	1					
70A	2	129155-51410	BOLT				2	2			W
(B=E/XXX) (D=E/XXX)											
71	2	119000-51800	BOLT	12	12	12	12	12			
72	2	119593-51850	BEARING	1	1	1					
72A	2	119594-51850	BEARING				1	1			
73	2	119000-51900	SEAL, AC1290E0	1	1	1	1	1			
73-1	2	119595-51070	SEAL, OIL				1				S
(B=*1997.06) (D=E/#50444)											
74	2	121952-51900	PLUG	1	1	1	1	1			
77	2	144626-51940	PLUG	1	1	1	1				
77-1	2	121952-51900	PLUG				1	1			S
(A=E/#40643) (B=E/#50348) (C=E/#40672) (D=E/#50338)											
78	2	144626-51950	O-RING, 1016	3	3	3					
78A	2	24341-000160	O-RING, 1AS16.0				2	2			
79	2	119593-51070	O-RING	1							
79-1	2	124410-51960	O-RING		1	1					S
(A=E/#40336)											
79A	2	24321-000750	O-RING, 1AG75.0				1				
79A-1	2	24321-000800	O-RING, 1AG80.0					1			S
(B=E/#50348) (D=E/#50338)											
80	2	22190-060000	WASHER, SEAL 6	4	4	4	4	4			
80-1	2	22190-060003	WASHER, SEAL 6				4				N
(B=*1999.01) (D=E/#50486)											
81	2	22351-020008	PIN, SPRING 2.0X 8	1	1	1	1	1			
82	2	22351-020012	PIN, SPRING 2.0X12	1	1	1	1	1			
83	2	23414-220029	GASKET, 22X1.0	1	1	1	1	1			
84	2	24341-000260	O-RING, 1AS26.0	6	6	6	6	6			
85	2	24341-000500	O-RING, 1AS50.0	1	1	1					
85A	2	24341-000550	O-RING, 1AS55.0				1				
85A-1	2	24341-000560	O-RING, 1AS56.0					1			S
(B=E/#50348) (D=E/#50338)											
86	2	24352-010160	O-RING	6	6	6					
86A	2	144626-51680	O-RING				6	6			
87	2	26106-060122	BOLT, M6X 12 PLATED	12	12	12					

Remarks  
 (1) INTERCHANGEABLE BY SIMULTANEOUS REPLACEMENT WITH FIG29 F.I. PIPE.  
 (A)=6LY-UTE.  
 (B)(C)=6LY-UTE,6LYM-UTE.  
 (D)(E)=6LY-STE,6LYM-STE.

Fig.1. FUEL INJECTION PUMP

(A)=719573-51300  
 (B)=719573-51302  
 (C)=719573-51303

(D)=719574-51310  
 (E)=719574-51311  
 (F)=

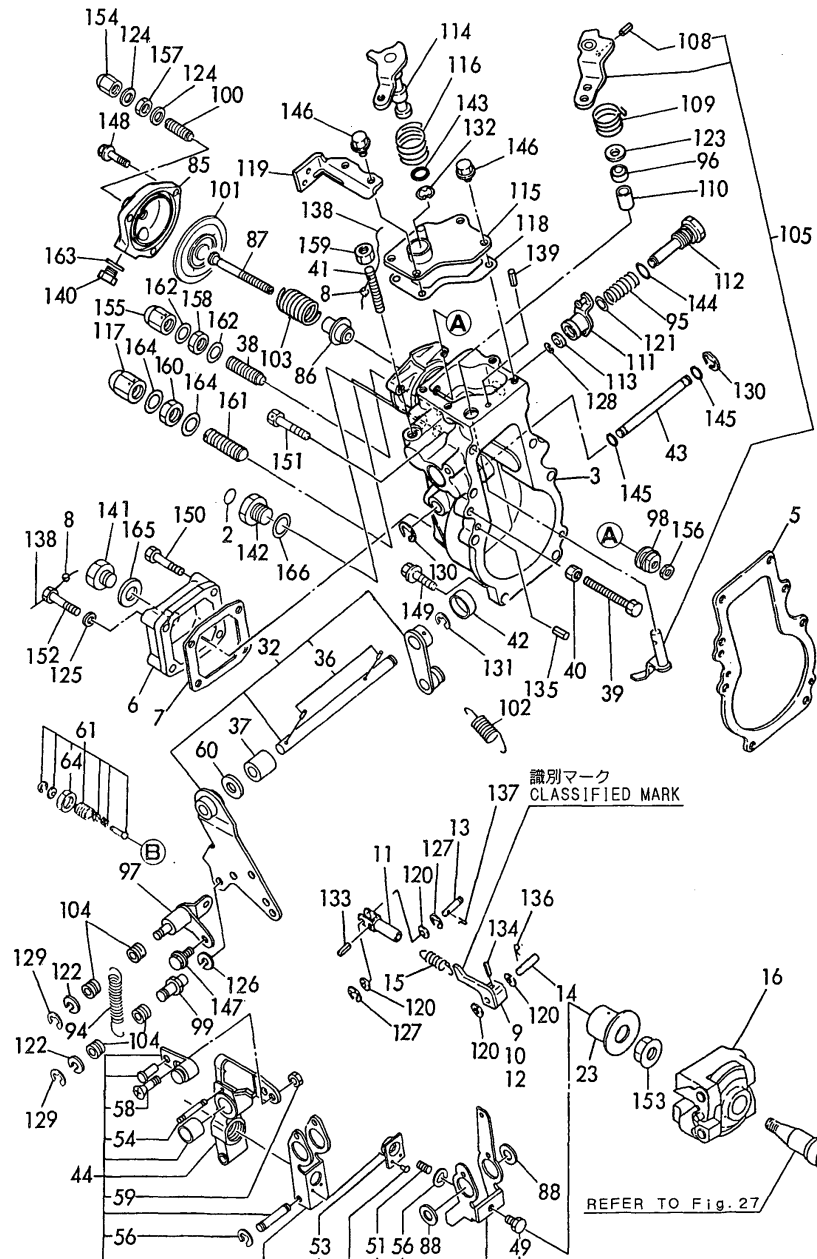


No.	Lev.	Parts No.	Description	Q'ty						I	R
				(A)	(B)	(C)	(D)	(E)	(F)		
87-1	2	26106-060142 (B=*1999.01)	BOLT, M6X 14 PLATED (D=E/#50486)				12	12			N
88	2	26106-060252	BOLT, M6X 25 PLATED	4			4				
88A-1	2	26106-060202 (A=E/#40336)	BOLT, M6X 20 PLATED		4	4					S
88A-2	2	119175-51070 (A=*1998.01)	BOLT, M6X20 (C=E/#40752)			4					N
88B-1	2	26106-060302 (B=E/#50348)	BOLT, M6X 30 PLATED (D=E/#50338)						4		S
88B-2	2	119594-51070 (B=*1998.05)	BOLT, M6X30 (D=E/#50458)						4		N
89	2	26216-060162	STUD, M6X 16	3	3	3	3	3			
90	2	26366-080002	NUT, M8	12	12	12	12	12			
91	2	26450-060352	BOLT, M6X 35	2	2						
91-1	2	26450-060402 (A=E/#40643)	BOLT, M6X 40 (C=E/#40672)			2					S
91A	2	26450-060402	BOLT, M6X 40				2	2			
93	2	127691-52010	FUEL FEED PUMP	1	1	1	1	1			
96	2	129155-51270 (A=E/#40643)	STOPPER, TAPPET (B=E/#50348) (C=E/#40672)			2			2		W
97	2	129155-51280 (A=E/#40643)	O-RING, S6 (B=E/#50348) (C=E/#40672)			2			2		W

Remarks

- (1) INTERCHANGEABLE BY SIMULTANEOUS REPLACEMENT WITH FIG29 F.I. PIPE.
- (A)=6LY-UTE.
- (B)(C)=6LY-UTE,6LYM-UTE.
- (D)(E)=6LY-STE,6LYM-STE.

Fig.2. GOVERNOR

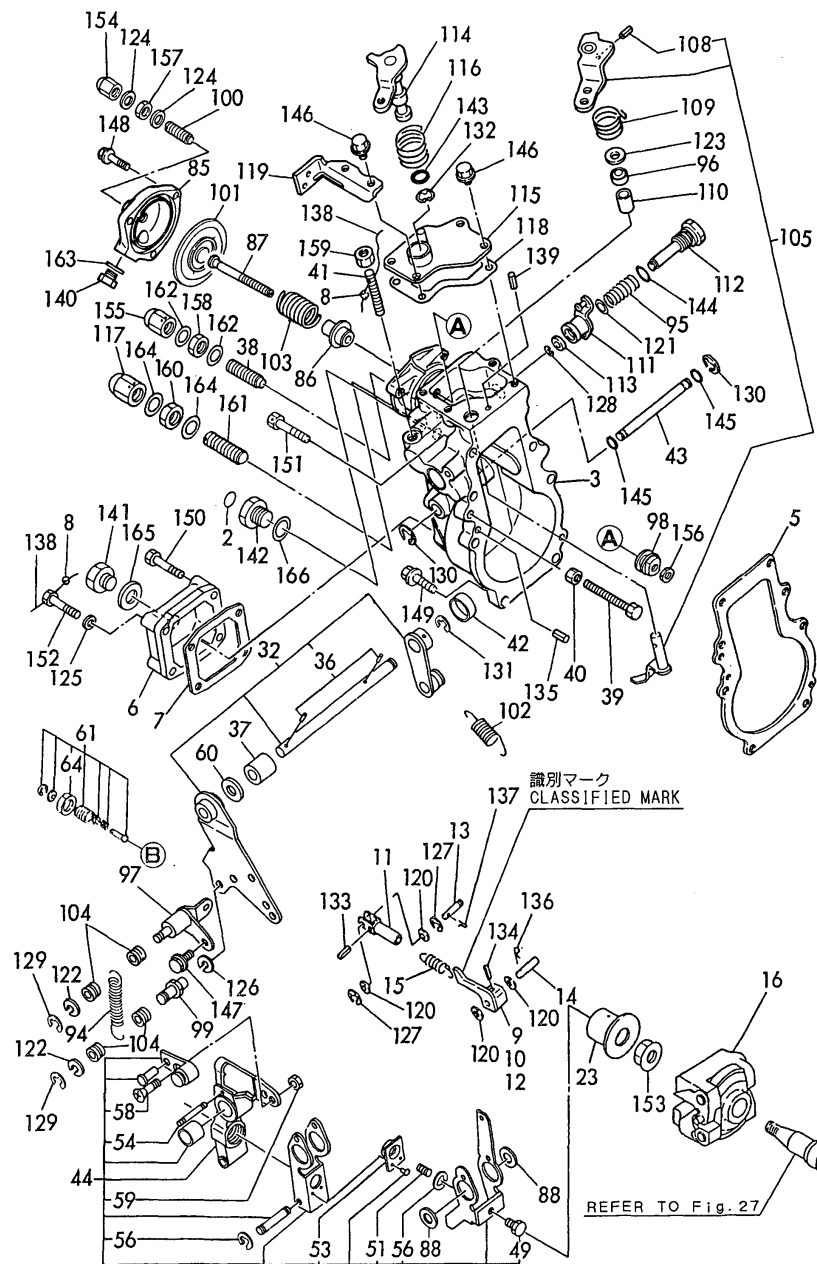


(A)=6LY-UTE  
(B)=6LY-STE  
(C)=6LY-UTE

(D)=6LYM-STE  
(E)=  
(F)=

No.	Lev.	Parts No.	Description	Q'ty						I	R
				(A)	(B)	(C)	(D)	(E)	(F)		
2	2	124610-51970	LABEL	1	1	1	1				
3	2	119573-61010	CASE, GOVERNOR	1	1	1	1				
5	2	119000-61051	GASKET	1	1	1	1				
5-1	2	119000-61052	GASKET	1	1	1	1				R
		(A=*1998.12) (B=*1998.12) (C=#40820) (D=#50481)									
6	2	119187-61071	COVER, GOVERNOR CASE	1	1	1	1				
7	2	127695-61071	GASKET	1	1	1	1				
8	2	135210-61090	LEAD	3	3	3	3				
9	2	119593-61100	LINK	1	1	1	1				
10	2	119593-61110	LINK	1	1	1	1				
11	2	119000-61120	LINK	1	1	1	1				
12	2	119593-61120	LINK	1	1	1	1				
12A	2	119593-61130	LINK, 10.5	1	1	1	1				W
		(A=#40552) (B=#50271) (C=#40567) (D=#50307)									
12B	2	119593-61140	LINK, 11.5	1	1	1	1				W
		(A=#40552) (B=#50271) (C=#40567) (D=#50307)									
12C	2	119593-61150	LINK, 12.5	1	1	1	1				W
		(A=#40552) (B=#50271) (C=#40567) (D=#50307)									
13	2	119000-61170	PIN, LINK	1	1	1	1				
13-1	2	119595-61170	PIN, LINK	1	1	1	1				N
		(A=*1998.05) (B=*1998.05) (C=#40768) (D=#50458)									
14	2	119000-61180	PIN, LINK	1	1	1	1				
15	2	119187-61190	SPRING	1	1	1	1				
16	2	119173-61200	WEIGHT ASSY, GOVERNOR	1	1	1	1				
23	2	119187-61300	SLEEVE ASSY	1	1	1	1				
32	2	119173-61400	LEVER ASSY, CONTROL	1	1	1	1				
36	3	22322-030220	PIN, TAPER 3X22	2	2	2	2				
37	2	120323-61430	BUSH	2	2	2	2				
38	2	127695-61450	BOLT, CONTROL	1	1	1	1				
39	2	171353-61460	BOLT, IDLE	1	1	1	1				
40	2	119000-61470	NUT, M6	1	1	1	1				
41	2	121850-61470	BOLT, LIMITER	1	1	1	1				
42	2	129795-61470	PLUG, 20	1	1	1	1				
43	2	119000-61490	SHAFT	1	1	1	1				
44	2	119573-61500	LEVER ASSY, GOVERNOR	1							
44-1	2	119174-61500	LEVER ASSY, GOVERNOR	1	1						N
		(A=#40162)									
44A	2	119594-61500	LEVER ASSY, GOVERNOR		1		1				
49	3	127495-61540	SHIFTER	1	1	1	1				
51	3	119187-61612	SPRING, FUEL CONTROL	1							
51-1	3	120130-61600	SPRING, FUEL CONTROL	1	1						N
		(A=#40162)									
51A	3	119594-61600	SPRING, FUEL CONTROL		1		1				
53	3	119187-61910	RETAINER	1							
53-1	3	119187-61911	RETAINER, SPRING	1	1	1	1				
54	3	119187-61930	PIN	1	1	1	1				
56	3	22272-000040	RING, E- 4	5	5	5	5				
58	3	26577-060162	SCREW, M6X16	1	1	1	1				
59	3	26757-060002	NUT, LOCK M6	1	1	1	1				
60	2	120320-61540	SEAL, SC102004	1	1	1	1				
61	2	119573-61550	ANGLEICH ASSY	1							

Fig.2. GOVERNOR

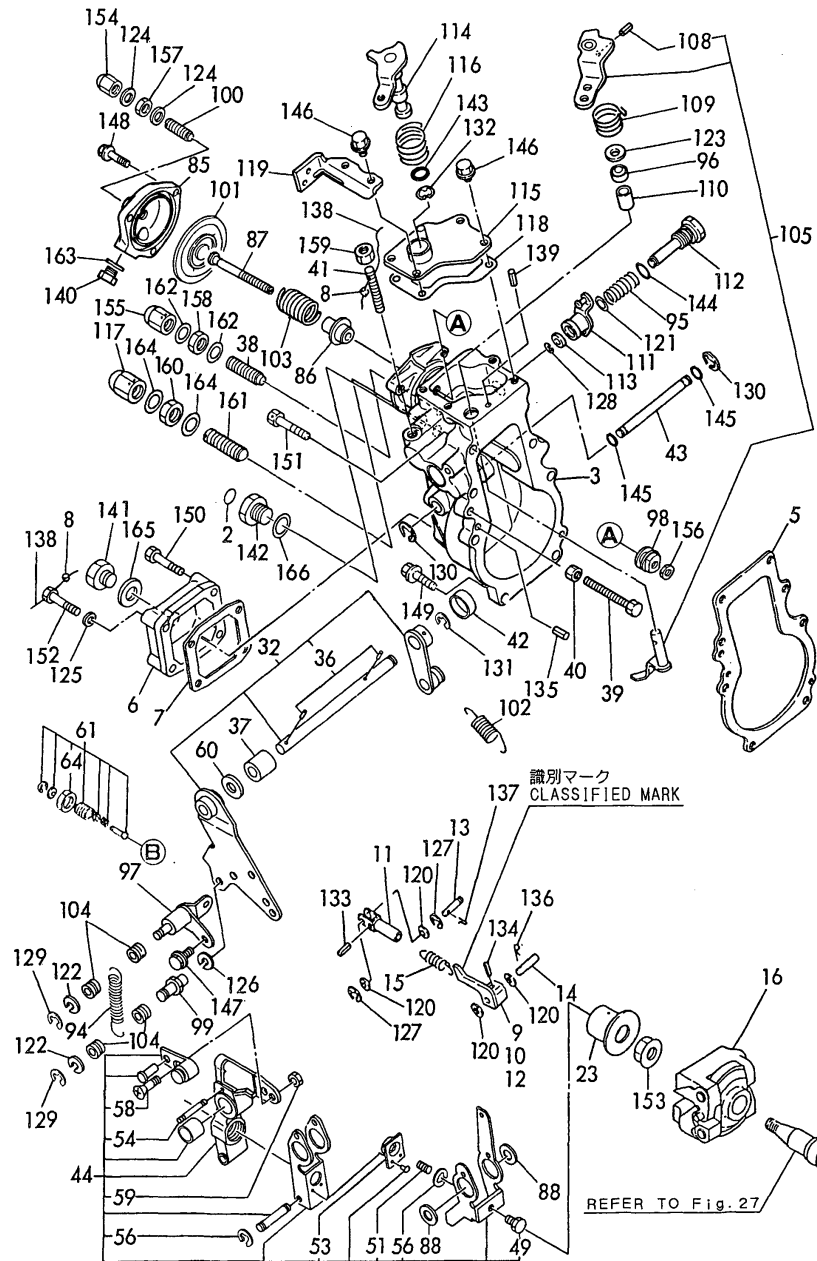


(A)=6LY-UTE  
(B)=6LY-STE  
(C)=6LYM-UTE

(D)=6LYM-STE  
(E)=  
(F)=

No.	Lev.	Parts No.	Description	Q'ty						I	R
				(A)	(B)	(C)	(D)	(E)	(F)		
61-1	2	119573-61551	ANGLEICH ASSY	1		1					N
		(A=E/#40162)									
61A	2	120324-61551	ANGLEICH ASSY		1		1				
64	3	124616-61580	NUT, LOCK	1	1	1	1				
85	2	129595-61600	CASE	1	1	1	1				
86	2	129595-61610	BUSH	1	1	1	1				
87	2	129595-61620	ROD, SLIDER	1	1	1	1				
88	2	119000-61630	SHIM SET	1	1	1	1				
94	2	119173-61650	SPRING	1	1	1	1				
94-1	2	119173-61651	SPRING	1	1	1	1				N
		(A=*1995.05) (B=*1995.05) (C=E/#40489) (D=E/#50240)									
95	2	119593-61650	SPRING	1	1	1	1				
96	2	148616-61650	SEAL, VC081404	1	1	1	1				
97	2	119173-61660	SUPPORT, SPRING	1	1	1	1				
98	2	127495-61660	RING	1	1	1	1				
99	2	121850-61670	BOLT	1	1	1	1				
100	2	129595-61670	BOLT, ADJUSTER	1	1	1	1				
101	2	129595-61680	DIAPHRAGM	1	1	1	1				
102	2	119588-61700	SPRING, GOVERNOR	1	1	1	1				
103	2	119593-61760	SPRING, DIAPHRAGM	1	1	1	1				
104	2	144626-61781	PIECE	2	2	2	2				
105	2	119593-61800	LEVER ASSY, STOP	1	1	1	1				
108	3	22351-030016	PIN, SPRING 3.0X16	1	1	1	1				
109	2	119593-61830	SPRING, RETURN	1	1	1	1				
110	2	127695-61840	BUSH	1	1	1	1				
111	2	119593-61850	LEVER	1							
111A	2	119594-61850	LEVER		1		1				
112	2	119593-61860	SHAFT	1	1	1	1				
113	2	119593-61890	SPACER	1	1	1	1				
114	2	119593-61900	LEVER	1	1	1	1				
115	2	119593-61910	COVER	1	1	1	1				
116	2	119593-61920	SPRING, RETURN	1	1	1	1				
117	2	129100-61930	NUT, CAP	1	1	1	1				
118	2	127695-61961	GASKET	1	1	1	1				
119	2	119593-61990	SUPPORT, WIRE	1	1	1	1				
120	2	22117-050000	WASHER, 5	4	4	4	4				
121	2	22117-080000	WASHER, 8	1	1	1	1				
122	2	22117-080000	WASHER, 8	2	2	2	2				
123	2	22137-080000	WASHER, 8	1	1	1	1				
124	2	22190-080000	WASHER, SEAL 8	2	2	2	2				
125	2	22217-060000	WASHER, SPRING 6	1	1	1	1				
126	2	22217-080000	WASHER, SPRING 8	1	1	1	1				
127	2	22272-000040	RING, E-4	2	2	2	2				
128	2	22272-000060	RING, E-6	1	1	1	1				
129	2	22272-000060	RING, E-6	2	2	2	2				
130	2	22272-000080	RING, E-8	2	2	2	2				
131	2	22272-000080	RING, E-8	1	1	1	1				
132	2	22272-000100	RING, E-10	1	1	1	1				
133	2	22351-030016	PIN, SPRING 3.0X16	1	1	1	1				
134	2	22351-030025	PIN, SPRING 3.0X25	1	1	1	1				
135	2	22351-050020	PIN, SPRING 5.0X20	2	2	2	2				

Fig.2. GOVERNOR



No.	Lev.	Parts No.	Description	Qty						I	R
				(A)	(B)	(C)	(D)	(E)	(F)		
136	2	22372-050000	PIN, SNAP 5	1	1	1	1				
137	2	22417-120120	PIN, COTTER 1.2X12	1	1	1	1				Z
		(A=*1998.05) (B=*1998.05) (C=E/#40768) (D=E/#50458)									
138	2	22451-100000	WIRE, 1.0	3							
138-1	2	22453-060000	WIRE, 0.6	3	3	3	3				N
		(A=EXXX)									
139	2	22492-060362	PIN, B6X36	1	1	1	1				
140	2	23887-100002	PLUG, 10	1	1	1	1				
141	2	23887-120002	PLUG, 12	1	1	1	1				
142	2	23887-160002	PLUG, 16	1	1	1	1				
143	2	24311-000110	O-RING, 1AP11.0	1	1	1	1				
144	2	24311-000120	O-RING, 1AP12.0	1	1	1	1				
145	2	24341-000080	O-RING, 1AS8.0	2	2	2	2				
146	2	26106-060122	BOLT, M6X 12 PLATED	4	4	4	4				
147	2	26106-060122	BOLT, M6X 12 PLATED	1	1	1	1				
148	2	26106-060182	BOLT, M6X 18 PLATED	3	3	3	3				
149	2	26106-060222	BOLT, M6X 22 PLATED	6	6	6	6				
150	2	26106-060302	BOLT, M6X 30 PLATED	3	3	3	3				
151	2	26106-060402	BOLT, M6X 40 PLATED	1	1	1	1				
152	2	26116-060302	BOLT, M6X 30 PLATED	1	1	1	1				
153	2	26376-120002	NUT, M12	1	1	1	1				
154	2	26667-080002	NUT, CAP M8	1	1	1	1				
155	2	26667-080002	NUT, CAP M8	1	1	1	1				
156	2	26756-060002	NUT, LOCK M6	1	1	1	1				
157	2	26756-080002	NUT, LOCK M8	1	1	1	1				
158	2	26756-080002	NUT, LOCK M8	1	1	1	1				
159	2	26756-080002	NUT, LOCK M8	1	1	1	1				
160	2	26777-120002	NUT, LOCK M12	1	1	1	1				
161	2	26911-080402	SCREW, M8X40	1	1	1	1				
162	2	43400-500420	SEAL WASHER 8	2							
162-1	2	22190-080002	WASHER, SEAL 6	2	2	2	2				N
		(A=E/#40283)									
163	2	43400-500430	SEAL WASHER 10S	1							
163-1	2	22190-100002	WASHER, SEAL 10	1	1	1	1				N
		(A=E/#40283)									
164	2	43400-500450	SEAL WASHER 12S	2							
164-1	2	22190-120002	WASHER, SEAL 12	2	2	2	2				N
		(A=E/#40283)									
165	2	43400-500450	SEAL WASHER 12S	1							
165-1	2	22190-120002	WASHER, SEAL 12	1	1	1	1				N
		(A=E/#40283)									
166	2	43400-500500	SEAL WASHER 16	1							
166-1	2	22190-160002	WASHER, SEAL 16	1	1	1	1				N
		(A=E/#40283)									



## Parts No. Index

Parts No.	Fig. No.	Ref. No.
119000-51050	1	4
119000-51060	1	6 -1
119000-51161	1	16
119000-51170	1	17
119000-51181	1	18
119000-51330	1	31
119000-51410	1	41
119000-51450	1	42
119000-51510	1	50
119000-51511	1	50 -1
119000-51550	1	53
119000-51570	1	54
119000-51580	1	55
119000-51590	1	56
119000-51650	1	57
119000-51800	1	71
119000-51900	1	73
119000-61051	2	5
119000-61052	2	5 -1
119000-61120	2	11
119000-61170	2	13
119000-61180	2	14
119000-61470	2	40
119000-61490	2	43
119000-61630	2	88
119173-61200	2	16
119173-61400	2	32
119173-61650	2	94
119173-61651	2	94 -1
119173-61660	2	97
119174-61500	2	44 -1
119175-51070	1	88 A-2
119175-51340	1	32 -1
119187-51341	1	32
119187-61071	2	6
119187-61190	2	15
119187-61300	2	23
119187-61612	2	51
119187-61910	2	53
119187-61911	2	53 -1
119187-61930	2	54
119573-51200	1	19
119573-61010	2	3
119573-61500	2	44
119573-61550	2	61
119573-61551	2	61 -1
119588-61700	2	102
119593-51030	1	3
119593-51060	1	6
119593-51070	1	79

Parts No.	Fig. No.	Ref. No.
119593-51080	1	7
119593-51090	1	8
119593-51100	1	10
119593-51300	1	28
119593-51500	1	49
119593-51520	1	51
119593-51530	1	52
119593-51850	1	72
119593-61100	2	9
119593-61110	2	10
119593-61120	2	12
119593-61130	2	12 A
119593-61140	2	12 B
119593-61150	2	12 C
119593-61650	2	95
119593-61760	2	103
119593-61800	2	105
119593-61830	2	109
119593-61850	2	111
119593-61860	2	112
119593-61890	2	113
119593-61900	2	114
119593-61910	2	115
119593-61920	2	116
119593-61990	2	119
119594-51030	1	3 A
119594-51060	1	6 A
119594-51061	1	6 A-1
119594-51070	1	88 B-2
119594-51100	1	10 A
119594-51200	1	19 A
119594-51290	1	40 A
119594-51340	1	32 A
119594-51341	1	32 A-1
119594-51450	1	42 A
119594-51451	1	42 A-1
119594-51850	1	72 A
119594-61500	2	44 A
119594-61600	2	51 A
119594-61850	2	111 A
119595-51030	1	3 A-1
119595-51050	1	4 A-1
119595-51060	1	6 A-2
119595-51070	1	73 -1
119595-51200	1	19 A-1
119595-61170	2	13 -1
120130-61600	2	51 -1
120320-61540	2	60
120323-61430	2	37
120324-61551	2	61 A

Parts No.	Fig. No.	Ref. No.
121850-51700	1	69
121850-61470	2	41
121850-61670	2	99
121952-51900	1	74
		77 -1
122710-51050	1	5
122710-51350	1	40
124410-51050	1	5 A
124410-51960	1	79 -1
124610-51970	2	2
124616-61580	2	64
127495-61540	2	49
127495-61660	2	98
127691-52010	1	93
127695-61071	2	7
127695-61450	2	38
127695-61840	2	110
127695-61961	2	118
129100-61930	2	117
129155-51270	1	26
		96
129155-51280	1	27
		97
129155-51410	1	70 A
129595-61600	2	85
129595-61610	2	86
129595-61620	2	87
129595-61670	2	100
129595-61680	2	101
129795-61470	2	42
135210-61090	2	8
144626-51090	1	9
144626-51680	1	86 A
144626-51940	1	77
144626-51950	1	78
144626-61781	2	104
148616-61650	2	96
152623-51720	1	70
171353-61460	2	39
22117-050000	2	120
22117-080000	2	121
		122
22137-080000	2	123
22190-060000	1	80
22190-060003	1	80 -1
22190-080000	2	124
22190-080002	2	162 -1
22190-100002	2	163 -1
22190-120002	2	164 -1
		165 -1

Parts No.	Fig. No.	Ref. No.
22190-160002	2	166 -1
22217-060000	2	125
22217-080000	2	126
22272-000040	2	56
		127
22272-000060	2	128
		129
22272-000080	2	130
		131
22272-000100	2	132
22322-030220	2	36
22351-020008	1	81
22351-020012	1	82
22351-030016	2	108
		133
22351-030025	2	134
22351-050020	2	135
22372-050000	2	136
22417-120120	2	137
22451-100000	2	138
22453-060000	2	138 -1
22492-060362	2	139
23414-220029	1	83
23887-100002	2	140
23887-120002	2	141
23887-160002	2	142
24142-322050	1	4 A
24311-000110	2	143
24311-000120	2	144
24321-000750	1	79 A
24321-000800	1	79 A-1
24341-000080	2	145
24341-000160	1	78 A
24341-000260	1	84
24341-000500	1	85
24341-000550	1	85 A
24341-000560	1	85 A-1
24352-010160	1	86
26106-060122	1	87
		146
		147
26106-060142	1	87 -1
26106-060182	2	148
26106-060202	1	88 A-1
26106-060222	2	149
26106-060252	1	88
26106-060302	1	88 B-1
		150
26106-060402	2	151
26116-060302	2	152

# Parts No. Index

Parts No.	Fig. No.	Ref. No.
26216-060162	1	89
26366-080002	1	90
26376-120002	2	153
26450-060352	1	91
26450-060402	1	91 -1 91 A
26577-060162	2	58
26667-080002	2	154 155
26756-060002	2	156
26756-080002	2	157 158 159
26757-060002	2	59
26777-120002	2	160
26911-080402	2	161
43400-500420	2	162
43400-500430	2	163
43400-500450	2	164 165
43400-500500	2	166
719573-51300	1	1
719573-51302	1	1 -1
719573-51303	1	1 -2
719574-51310	1	1 A
719574-51311	1	1 A-2

Parts No.	Fig. No.	Ref. No.
-----------	----------	----------

Parts No.	Fig. No.	Ref. No.
-----------	----------	----------

Parts No.	Fig. No.	Ref. No.
-----------	----------	----------